

Adbry[®]
(tralokinumab-ldrm)
Injection 150 mg • 300 mg

Training Demonstration Syringe Reference Guide

For Training Purposes Only

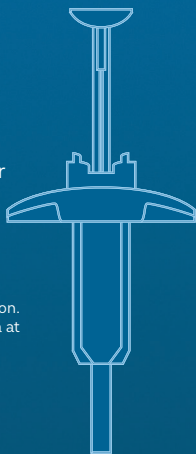
Welcome!

Your healthcare professional has shown you how to inject Adbry[®] and now you are ready to practice at home. After you have read the information in the Welcome Pack, practiced your injection with the Training Demonstration Syringe*, and watched an Adbry injection video for guidance, you can call your Case Manager[†] with any additional questions at **844-MY-ADBRY (844-692-3279)**.

We're excited to help you and ready for your call.

*Training Demonstration Syringe does not contain needle or medication.
[†]Restrictions apply. See Full Terms, Conditions, and Eligibility Criteria at www.Adbry.com/terms-conditions.

Please see Indication and Important Safety Information throughout the Adbry Treatment Brochure and full Prescribing Information, Patient Information, and Instructions for Use in the pocket of the Adbry Treatment Brochure.



Not actual size.

IMPORTANT INFORMATION ON HOW TO USE THE TRAINING DEMONSTRATION SYRINGE



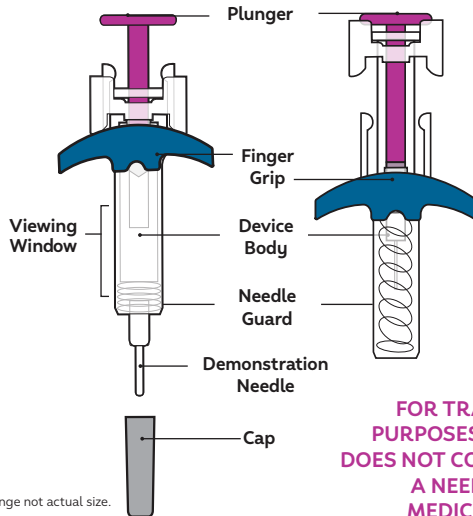
These are the training instructions for the Training Demonstration Syringe only. It is important to note that the Training Demonstration Syringe does NOT contain a needle or medication. Practice and reset the Training Demonstration Syringe as many times as you'd like, or until you feel comfortable. When finished, store in your Adbry® Welcome Pack.

The Training Demonstration Syringe and this guide do not replace learning how to self-inject Adbry from your healthcare professional. When administering Adbry with an actual syringe, needle, and medication, please refer to the Instructions for Use that come inside the Adbry carton.

NOTE: Do not attempt to reset a real syringe after a real injection.

Before Use

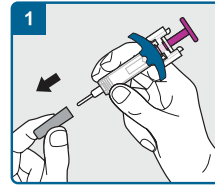
After Use



**FOR TRAINING
PURPOSES ONLY.
DOES NOT CONTAIN
A NEEDLE OR
MEDICATION.**

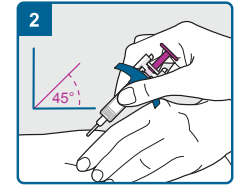
Syringe not actual size.

How to Use Training Demonstration Syringe



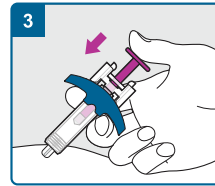
Pull Off Cap

Pull the cap off the Training Demonstration Syringe to begin.



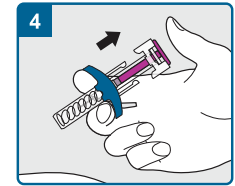
Place the Training Demonstration Syringe

Place the Training Demonstration Syringe on the pinched skin at a 45-degree angle.



Push the Plunger

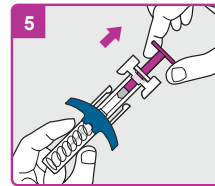
Push the plunger down slowly as far as it will go.



Release and Lift

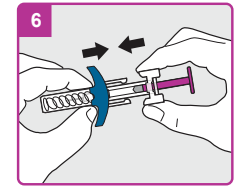
Release your thumb and lift the Training Demonstration Syringe. The needle guard will cover the demo needle.

How to Reset Training Demonstration Syringe



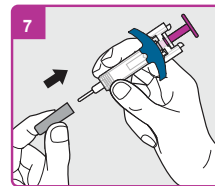
Pull the Plunger

Start by pulling the plunger back to its original position.



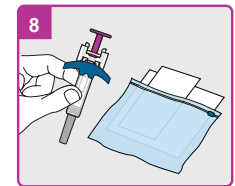
Lock Into Place

Squeeze the device finger grip and body together until they lock into place.



Replace the Cap

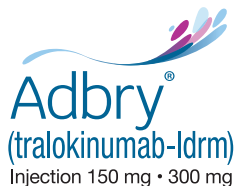
Place the cap back on the Training Demonstration Syringe.



Store in Pack

When finished, store in your Adbry Welcome Pack.

Please see Indication and Important Safety Information throughout the Adbry Treatment Brochure and full Prescribing Information, Patient Information, and Instructions for Use in the pocket of the Adbry Treatment Brochure.

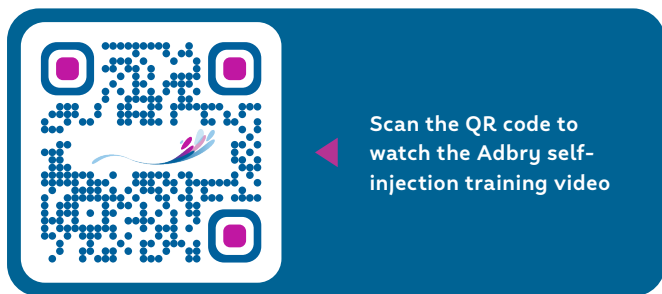


Adbry® advocate™ 

We're here to help support you through your treatment with Adbry® and can be reached at **844-MY-ADBRY (844-692-3279)** 8 AM to 8 PM EST, Monday through Friday.

After you learn how to inject Adbry from your healthcare professional, you can practice at home with your Training Demonstration Syringe, which does not contain a needle or medication.

When you are ready to begin your treatment at home, scan below to watch and learn more about the injection process, or visit www.Adbry.com.



Please see Indication and Important Safety Information throughout the Adbry Treatment Brochure and full Prescribing Information, Patient Information, and Instructions for Use in the pocket of the Adbry Treatment Brochure.



The LEO Pharma logo and Adbry® are registered trademarks and Advocate™ is a trademark of LEO Pharma A/S.

© 2024 LEO Pharma Inc. All rights reserved. MAT-70129 August 2024